

Six Senses

Bourne End



the
VISION

A boutique collection of just six magnificent homes thoughtfully designed to evoke a profound connection between architecture, environment and emotion.

From City To Sanctuary – Nestled within the breath-taking Buckinghamshire countryside, on the edge of The Chilterns, a designated Area of Outstanding Beauty, Bourne End promises to excite, enchant, surprise and inspire.

Sprawling verdant landscapes reach out to the banks of the River Thames providing boundless opportunities for relaxation and exploration. For the discerning parent, exceptional schooling options are plentiful, ensuring your family's growth in an idyllic setting. With excellent transport links it's easy to balance the serenity of rural life with the allure of the capital.

The Six Senses – For those seeking the perfect blend of sophistication, space and tranquility, the Six Senses beckons as the ultimate haven. Here you will find a harmonious fusion of every essential element woven into the fabric of everyday life.

CONTENTS

Introduction	7
A grand entrance	8
A lifestyle defined by the extraordinary	10
The Six Senses aerial view	12 -13
A garden view (The Aspen)	14 -17
Interior images	20 - 39
A touch of elegance	40
Meet the designer	42-45
Amara Bespoke	46-47
The Geography	48
Green & pleasant land	50 - 51
Local area map	52 - 53
Get to know the neighbours	54 - 55
London travel connections	56 - 57
Where life comes together	58
Life on the water's edge	60 - 61
A true sense of occasion	62 - 63
Life's little luxuries	64 - 65
A symphony of flavour	66 - 71
Enrich the senses	72
Get back to nature	74 - 81
Bourne for success	82
List of local schools	84 - 85
Our promises delivered	86
Previous developments	88 - 89



A grand entrance, page 8



Interior images (Computer-generated), pages 18 - 37



Where life comes together, pages 56 - 67

Meet the designer, pages 40 - 43



Enrich the senses, pages 68 - 77



Our senses allow us to savour every one of life's moments. Whether it's the gentle rustle of a breeze through autumn leaves, the tantalising aroma of a freshly brewed morning coffee, or the warmth of a loved one's embrace, they empower us to fully engage with, enjoy and remember even the most fleeting of moments.

With these senses, we effortlessly and sometimes unknowingly absorb our surroundings. You're invited to step into a life filled with meaning, where every moment, every home and every experience is undoubtedly special. There is no need to elaborate with explanations or definitions; simply enjoy the uniqueness of every encounter.



Six Senses
Bourne Park



Enjoy an elevated lifestyle where there is difference in every detail.



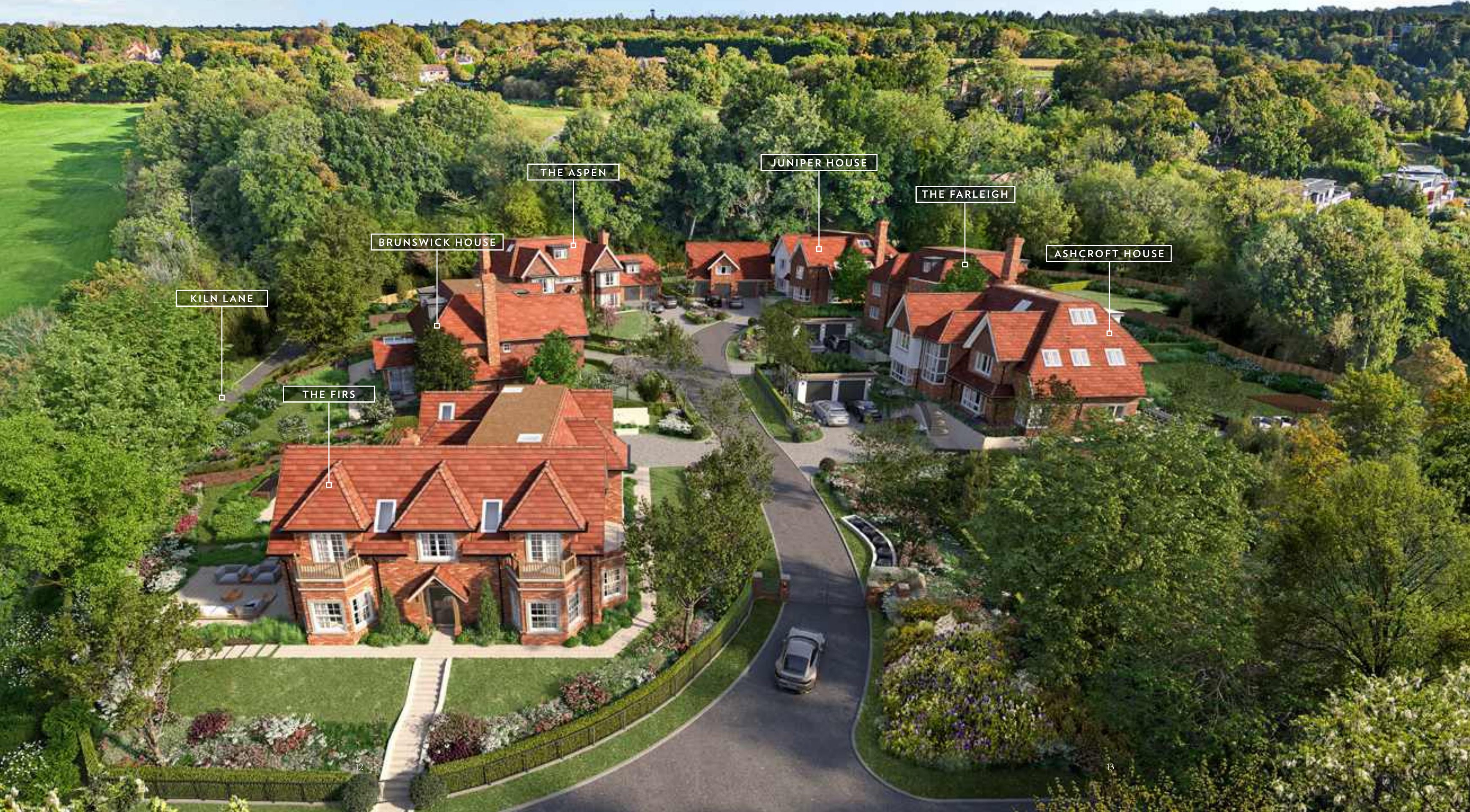
a lifestyle
DEFINED *by the*
EXTRAORDINARY

For those who relish the extraordinary and are tempted by the finer things in life, the Six Senses unveil a life and lifestyle beyond compare where the finest attention to detail, the very latest technology and high-spec finishing touches set a new standard in luxury living.



A private enclave nestled amidst the rich tapestry of Buckinghamshire's breath-taking countryside.

life from a **WHOLE**
new **PERSPECTIVE**



KILN LANE

THE FIRS

BRUNSWICK HOUSE

THE ASPEN

JUNIPER HOUSE

THE FARLEIGH

ASHCROFT HOUSE

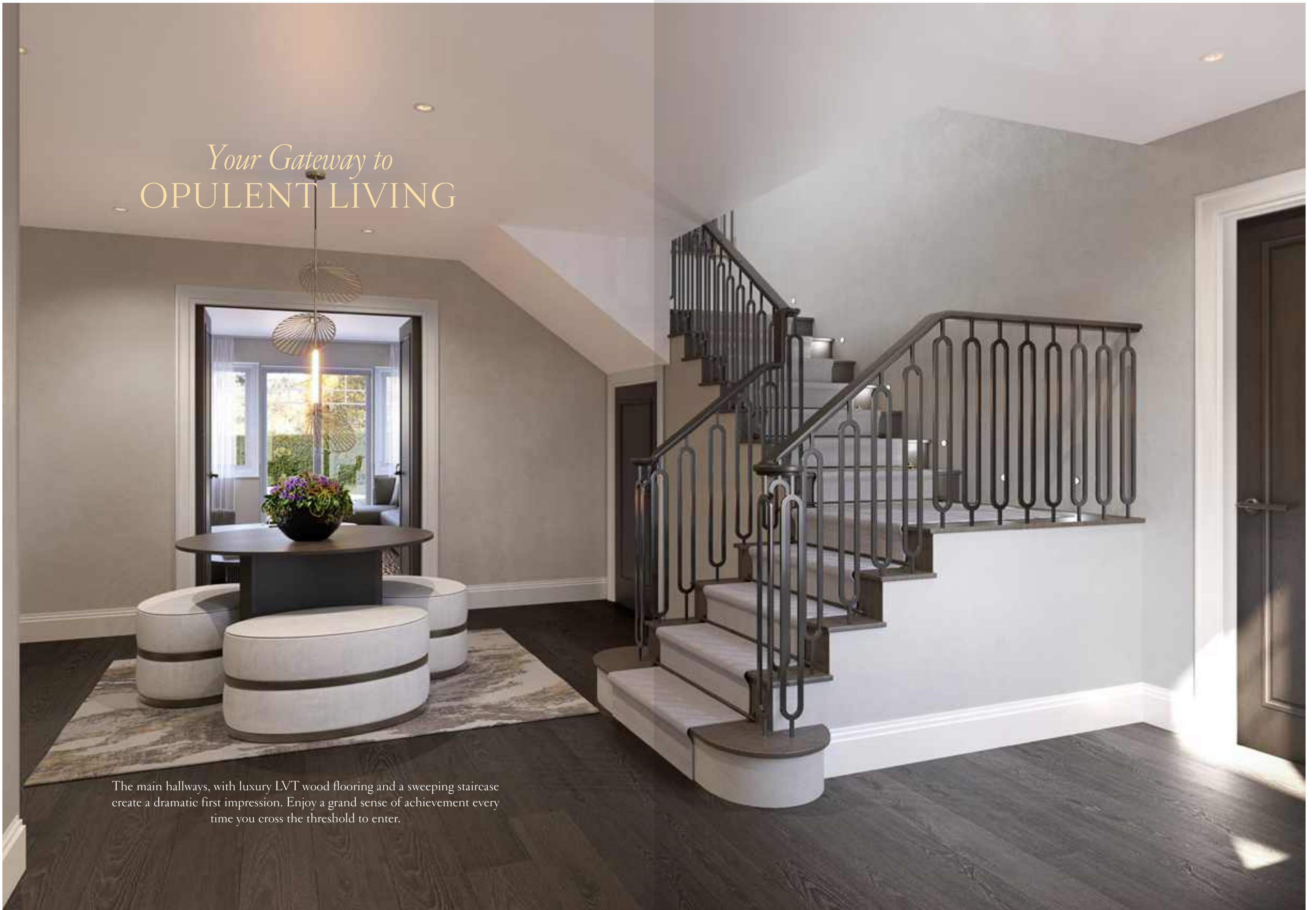




thoughtfully DESIGNED
to EVOKE *a profound*
CONNECTION *between*
ARCHITECTURE,
environment and EMOTION

Your Gateway to
OPULENT LIVING

The main hallways, with luxury LVT wood flooring and a sweeping staircase create a dramatic first impression. Enjoy a grand sense of achievement every time you cross the threshold to enter.



The formal living rooms are well-proportioned and brimming with possibilities, providing plenty of flexibility to adapt, customise your surroundings and enjoy adding the personal touch as your needs or moods change.

living life to
THE FULL



the difference is
in THE DETAIL

The heart of every home, and a haven of technology and efficiency. These statement kitchens are custom creations by Amara Bespoke and are equipped with the latest appliances such as Miele Wi-Fi enabled microwaves, Quooker hot taps and full height wine coolers.

designed with
INTENTION

Nurture focus, unleash creativity and enjoy privacy from the comfort of home in this purpose-designed workspace.



smart
THINKING

With smart technology seamlessly integrated throughout, savour both convenience and comfort.

fine
DINING

From casual soiree to candlelit dinner or intimate family celebration,
the stage is set for memorable occasions.





simply
SERENE

The Principal Suites are adorned with subtle tones, sumptuous fabrics and exquisite finishing touches. Every suite is a calm and welcoming sanctuary with dedicated seating area and Dressing Room. Acute attention to the finest design details have ensured a stylish escape where rest and relaxation are never compromised.

walk-in
to **WONDERFUL**

Hand-crafted solid oak joinery, integrated lighting, floor-to-ceiling mirrors, pull-down hang rails and soft-close drawers ensure these sumptuous Dressing Rooms make getting ready a fine art.



As if walk-in rainfall shower, dual vanities and the very latest Hansgrohe and Duravit bathroom suite wasn't enough, indulge in the ultimate self-pampering experience where lighting, temperature and mood can be fine-tuned at the touch of a button.



the epitome of
ENTERTAINMENT

Wired for the latest theatre systems and surround sound, this state-of-the-art home entertainment suite seamlessly blends technology with luxury.



Large format tiles, dual vanities, underfloor heating and subtle storage solutions create a sensuous, highly sought-after personal escape.



a touch
of ELEGANCE

From luxury flooring to a carefully curated colour palette, lofty ceilings to abundant natural light sources, each unique property has been meticulously crafted to optimise light, space and luxury.



meet the
DESIGNER

STEP INTO THE WORLD OF LUXURY RESIDENTIAL INTERIORS WITH NEERALI, OUR ESTEEMED HEAD OF INTERIORS AS SHE SHARES HER TEAMS CREATIVE PROCESS.

With over 14 years of dedicated experience in luxury residential interior design, Neerali worked with Amara Property since 2016 and has been creating superlative residences ever since. Known for her unrivalled attention to detail, her approach blends timeless elegance with modern sensibilities to create classic residences with a sophisticated, yet with contemporary style.

How would you describe the interior style of Six Senses?

Six Senses embodies a luxurious yet timeless appeal. However despite being timeless we wanted to make sure it also felt modern and elegant. With that in mind, each space has been curated to exude sophistication and refinement. I ought to add that our guiding design principle is a commitment to an understated type of luxury – whereby the beauty is found in the subtle interplay of textures, colours, and forms.

Could you walk us through the selection process for materials and finishes?

Sure, we maintained a core theme of neutral cashmere and taupe tones and then imbued the interiors with subtle hues of bronze, alongside sumptuous velvets, linens, soft silks, wood and mineral surfaces.

Were there any features of the development that you found particularly rewarding to work on?

Yes absolutely, it would be the abundance of natural light, which has allowed the interior spaces to feel spacious and really emphasis the colour and textural palette. Furthermore, we enjoyed designing the grand external landscaping plans with integrated lighting and tailored planting.

“

Each home is unique, so we grasped the opportunity to make every property shine.



Neerali Kundi
Head of Interiors

Amara BESPOKE

The team at Amara Bespoke are a talented collective of passionate creatives with a wealth of experience to bring to life the vision of their clients dream homes



Offering a full interior architecture and design service, the team works closely with clients throughout the entire design journey. This service includes guidance through every step of the journey, from initial concepts and mood boards to final execution. The team have an unwavering dedication to client satisfaction and take great joy in helping their discerning clients realise their perfect homes.



the
GEOGRAPHY

Embraced by rolling hills and verdant landscapes and graced by its captivating riverside setting along the majestic Thames, envision a life of sophisticated serenity.

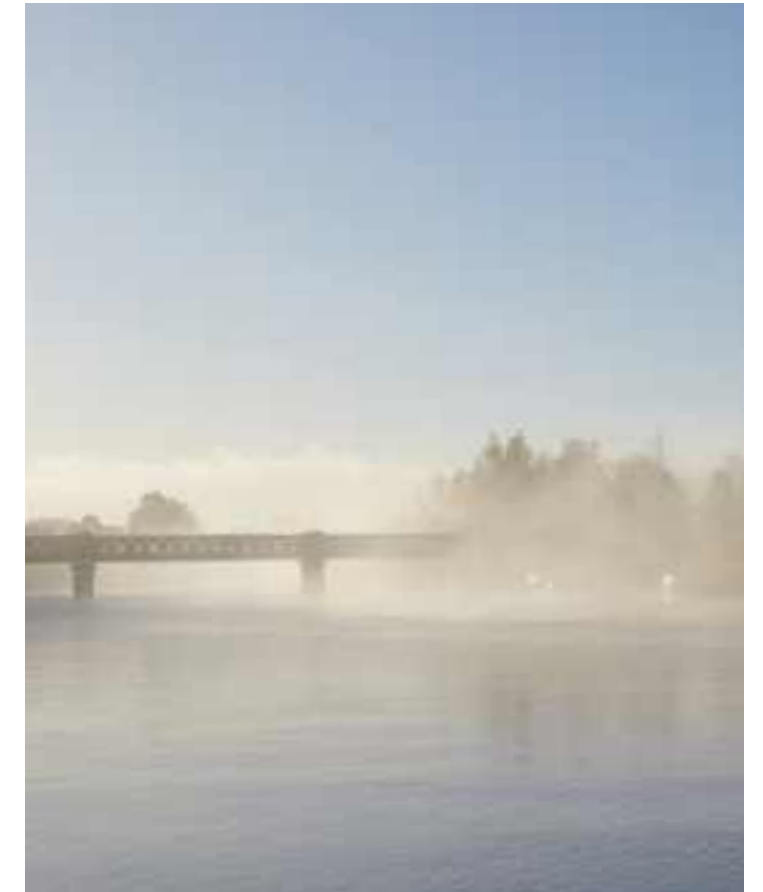


GREEN *and* *pleasant* LAND



The Chiltern Hills

Spanning the four counties of Buckingham, Oxfordshire, Hertfordshire and Bedfordshire, and as a designated Area of Outstanding Beauty, The Chiltern Hills provides a breath-taking backdrop for a wealth of outdoor activities. Whether cycling, walking, hiking or running, take a few moments to celebrate your stunning new surroundings.



River Thames

From relaxed riverside dining to sailing, canoeing, kayaking or rafting, Bourne End's prime position on this iconic river offers the ultimate temptation for those wishing to escape the stresses of the city.

From Marlow to Henley-Upon-Thames, Bray to Windsor, enjoy an iconic location close to some of Buckinghamshire, Berkshire and Oxfordshire's most historic and scenic towns and villages.

go
EXPLORE



get to KNOW *the* NEIGHBOURS



Beaconsfield

Divided into the 'old' and the 'new', this historic market (and commuter) town offers quintessential charm with its blend of stunning architecture, quaint streets and vibrant culture. Dedicate time to browse the weekly farmers market or to explore the world's oldest model village.

Marlow

Graced by a suspension bridge linking Buckingham and Berkshire, Marlow enjoys an enviable position between Henley and Windsor - one of the most coveted destinations on the Thames. Wander the vibrant high street with its splendid array of independent shops, exclusive wine bars, bustling bistros and historic pubs. You may see acclaimed chef Tom Kerridge's Pub in the Park festival meld live music with magnificent cuisine.



Windsor

Timeless and brimming with charm, Windsor cannot fail to enchant. Windsor Castle, the oldest and largest inhabited castle in the world, is testament to the town's rich heritage and regal legacy. Wandering its quaint cobbled streets, it's easy to lose your thoughts to times gone by.

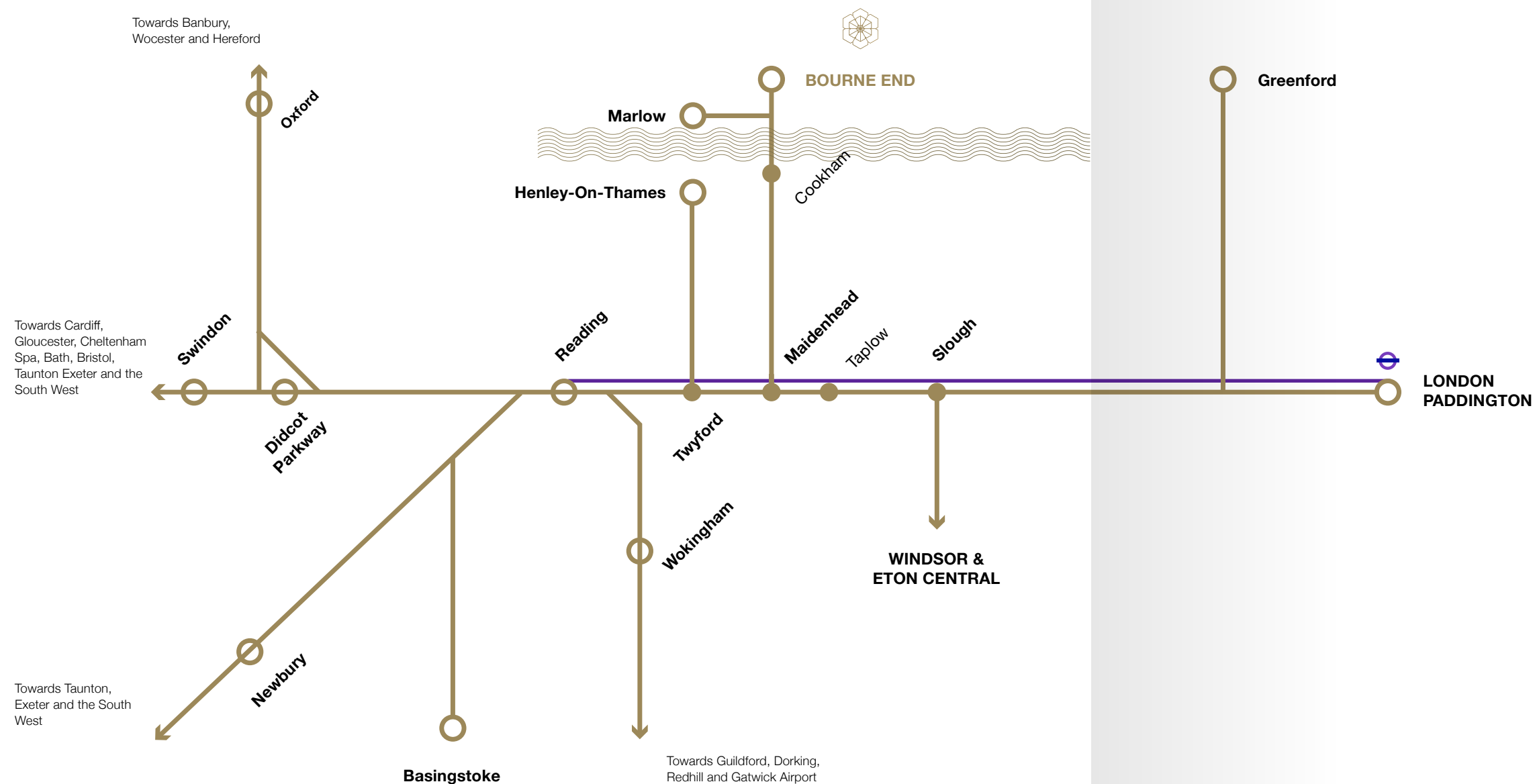
Maidenhead

This thriving, dynamic market town just a few miles from home offers an eclectic mix of lively cafes, bars and restaurants along with a vibrant retail and culture scene. Offering the ideal blend of urban convenience and natural beauty, you'll soon find an excuse for a fun-filled day out.



LONDON *calling*

Bourne End's superb transport connections, including a direct train service to London Paddington, make commuting a practical possibility – perfect for those in search of a peaceful retreat while still enticed by the excitement of the city.



By Car

Ideally situated for access to the A404 leading to High Wycombe and the M40 Junction 4. While the close proximity of the M40 and M25 enable access to central London and Heathrow.

Beaconsfield	1.2 miles
M40 (J2)	3 miles
Marlow	3.6 miles
Gerrards Cross	6 miles
High Wycombe	6.4 miles
Maidenhead	6.6 miles
Heathrow	16 miles
Central London	25 miles

By Rail

Easy access to Bourne End train station, only 0.8 miles from The Six Senses. Providing fast travel into London Paddington via the Elizabeth line.

Marlow	from 7 mins
Maidenhead	from 11 mins
Slough	from 21 mins
Reading	from 31 mins
London Paddington	from 60 mins


London
Paddington

From
60
mins

Access to London Paddington in just over an hour from Bourne End via the Elizabeth line (including transfer times). From 30 mins once at Maidenhead station (approximately 15 minutes travel and transfer time from Bourne End).



where
LIFE comes
TOGETHER

Bourne End's captivating location on the banks of the Thames and its proximity to the Chiltern Hills offers an enchanting backdrop with a rich array of exclusive water and land-based pursuits.

LIFE *on* *the* WATER'S EDGE

The renowned Henley Royal Regatta blends tradition with riverside opulence. With a backdrop of historic boathouses and meticulously manicured lawns, this dazzling spectacle epitomises luxury and leisure on the River Thames.

“

Life on the water cannot fail but to enrich the soul.



Whether dressing up in your finest for one of society's most anticipated events or simply throwing down a picnic blanket for an impromptu summer lunch, every day is an occasion.



*a TRUE sense
of OCCASION*



Royal Ascot

The highly prestigious sporting event where horse-racing meets high society. This world of equestrian grandeur is more than matched by exquisite fashion, lavish hospitality and fine dining.

Guards Polo Club

Known for its rich traditions, top-class facilities and close association with the Household Cavalry, Guards Polo Club is considered one of the most esteemed in the country.

BMW PGA Championship

Wentworth Club in Virginia Water plays host to one of the most prestigious golfing events in Europe. It's time to witness golfing greatness.



LIFE'S *little* LUXURIES

From charming boutiques to sprawling shopping malls, local artists to renowned luxury brands, the neighbouring towns and villages, coupled with London's extensive retail offerings, provide a diverse spectrum to fulfil every need and taste.



London
25.5 miles



Windsor
9.9 miles



Bourne End
0.8 miles



Beaconsfield
3.9 miles



Windsor
9.9 miles



Windsor
9.9 miles



Beaconsfield
3.7 miles



Windsor
9.7 miles



Beaconsfield
3.8 miles



Amersham
9.6 miles



Beaconsfield
3.8 miles



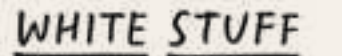
Marlow
4.7 miles



Windsor
9.9 miles



Windsor
10.8 miles



Beaconsfield
3.7 miles



Windsor
10.8 miles



Windsor
9.9 miles



Marlow
4.7 miles



Windsor
8.9 miles



Beaconsfield
3.7 miles



Windsor
9.9 miles



Beaconsfield
3.7 miles



Windsor
9.9 miles



Windsor
9.9 miles



Marlow
4.6 miles



Beaconsfield
3.7 miles



Marlow
4.7 miles



Windsor
9.8 miles



Beaconsfield
3.8 miles



Windsor
8.9 miles



a SYMPHONY *of* FLAVOUR

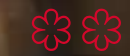
Indulge your senses in culinary excellence as you explore the gastronomic treasures nestled within the quaint towns of Bray, Marlow, and Taplow. Renowned worldwide for their exceptional dining experiences, these locales boast a constellation of Michelin-starred restaurants that beckon discerning palates from far and wide. From innovative fusion cuisines to classic gourmet fare, each establishment promises a symphony of flavours meticulously crafted by visionary chefs.



The Waterside Inn
6.4 miles



The Fat Duck
6.3 miles



The Hand and Flowers
4.6 miles



The Hind's Head
6.3 miles

Distances to the respective restaurants shown above are based on a car journey times from The Six Senses.

An array of FINE DINNING *discovery*



The Hind's Head (1 Michelin Star, Heston Blumenthal)

Bray 6.5 miles

As a haven for culinary enthusiasts, the picturesque village boasts several Michelin Star restaurants.

– *The Waterside Inn* (3 Michelin Stars, Alain Roux)
With three Michelin Stars, the ultimate culinary accolade, this stunning riverside retreat with Alain Roux at its helm needs little introduction.

– *The Fat Duck* (3 Michelin Stars, Heston Blumenthal)
Renowned for its innovative, whimsical approach, this fine dining experience will take you on a rather entertaining journey of quirky culinary discovery.

– *The Hind's Head* (1 Michelin Star, Heston Blumenthal)
Established as a hunting lodge in the 1400's, where better to enjoy traditional British pub fayre given a rather unique twist by one of the country's most celebrated chefs.



The Fat Duck (3 Michelin Stars, Heston Blumenthal)



Waterside Inn (Alain Roux)



Marlow 4.5 miles

– *The Hand and Flowers* (2 Michelin Stars, Tom Kerridge)
As the only pub in the UK to be awarded two Michelin stars, Tom Kerridge's flagship has elevated pub classics to exceptional new heights in refined yet relaxed surroundings.

Taplow 4.1 miles

– *Roux at Skindles* (Alain Roux)
The refined Roux legacy lives on in this elegant eatery designed to emanate the relaxed, 'round-the-corner' brasserie the family grew up with in France. Classic French flair meets timeless charm within this stunning riverside setting.

The Hand and Flowers (2 Michelin Stars, Tom Kerridge)





enrich
the SENSES

From the fresh scent of morning dew to the delicate touch of a spring petal or gentle hum of a summer bee, allow yourself to succumb to life's basic desires.

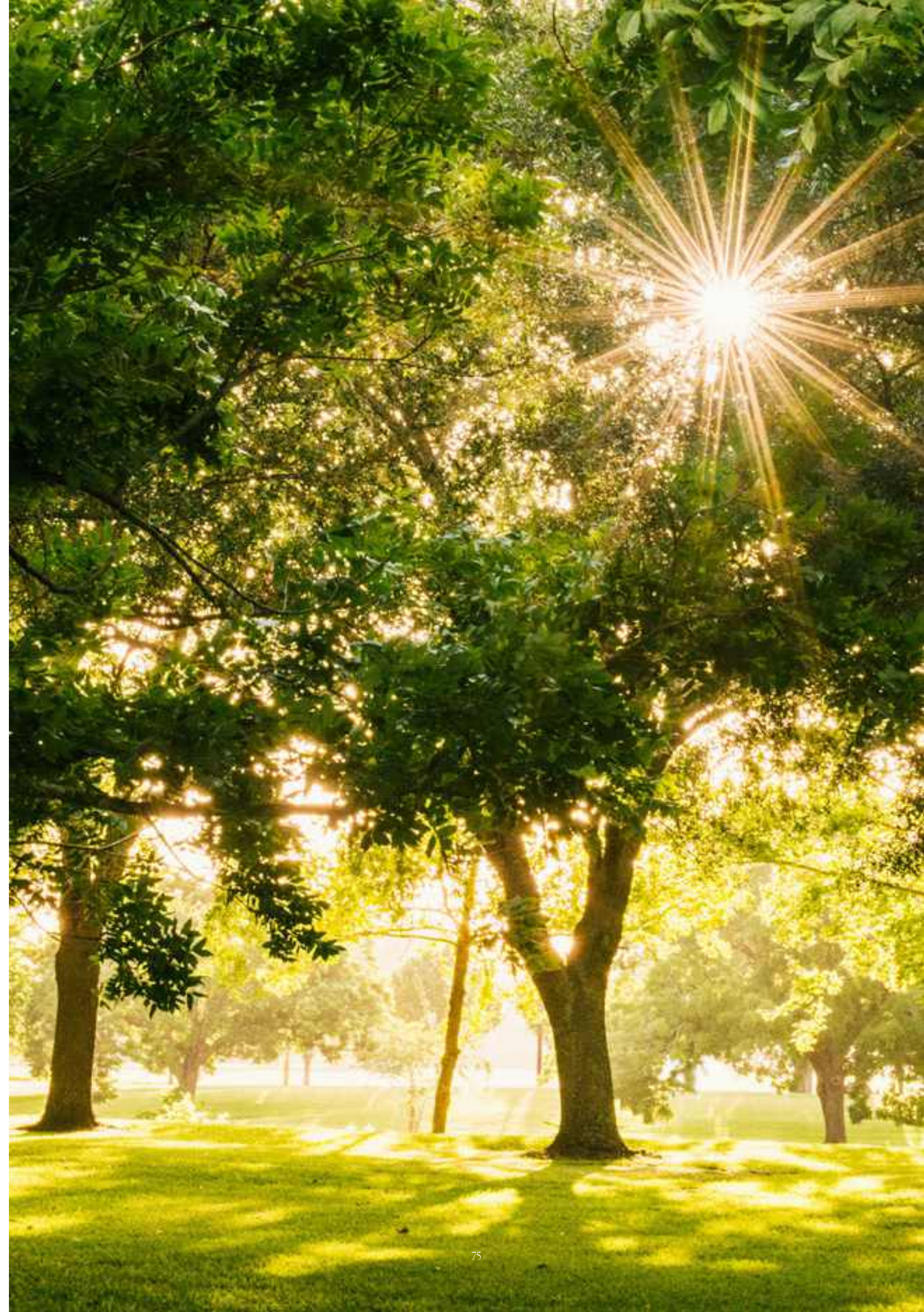
get
BACK to
NATURE

Whether indulging in early morning strolls or lazy park lunches, embarking on historical adventures or immersing yourself in nature, gardens and woodland, this is a place where time yields to tranquillity and the sense of serenity defies definition.



Higginson Park

With sprawling green spaces reaching the banks of the Thames, Higginson Park is the perfect spot for leisurely walks. In the warmer summer months pack a picnic to take full advantage of its tranquil riverside setting.



“

*Just six minutes away from The Six Senses
this pinnacle of intrigue and glamour makes
for the perfect romantic setting.*

Cliveden House

Dating back to the 17th century, the five-star Relais & Chateau hotel and spa, situated within stunning National Trust grounds, bestows a regal touch upon any occasion.



Windsor Great Park

A magnificent verdant escape with meticulously manicured gardens, ancient woodlands and shimmering lakes.

Savill Garden

Nestled within the regal splendour of Windsor Great Park, Savill Garden is a horticultural marvel where rare plant collections and immaculately kept flowerbeds create a mesmerising masterpiece of colour and form.





BOURNE *for* SUCCESS

From renowned private schools to top-tier public institutions, the finest primary and higher educational establishments are within reach, each a testament to academic excellence. Bourne End's highly coveted catchment area promises a commitment to nurturing young minds and the opportunity of a fulfilling future.



Primary

Claytons Primary School (1.3 miles)

Pre prep and prep

Davenies School for boys, Beaconsfield (4.1 miles)

High March School for girls, Beaconsfield (4.1 miles)

Grammar

Bourne End Academy (0.8 mile)

Beaconsfield High School for girls (3.6 miles)

Sir William Borlase's Grammar School, Marlow (4.5 miles)

Wycombe High School (girls) (5.4 miles)

John Hampden Grammar School, High Wycombe (boys) (6 miles)

Royal Grammar School, High Wycombe (boys) (6.9 miles)

Independent

Wycombe Abbey (girls) (5.8 miles)

Eton College (8.7 mile)

St Mary's School for girls (17.6 miles)





our PROMISES DELIVERED

Amara Property have an incredibly impressive portfolio of the finest homes in the finest postcodes and now Bourne End is getting the Amara treatment with Six Senses.

These are tailor-made homes created to satisfy every aspiration and demonstrated in each home is a tireless attention to detail. Our pledge to all our clients is simple

“We’ll create a home you’ll love to live in and a home you’ll be proud to own.”

THE INTERNATIONAL PROPERTY AWARDS 2023

Best Office Interiors
Best Residential Development

EVENING STANDARD AWARDS 2022

Best luxury House

EVENING STANDARD AWARDS 2021

Best Family Home

INTERNATIONAL PROPERTY AWARDS 2021

Development Marketing
Best Show Home

BUILD REAL ESTATE & PROPERTY AWARDS 2018 & 2019

Best luxury residential development contractors 2019
Luxury property development company of the year 2018

HOUZZ 2016

Awarded Best Of Houzz 2016
Houzz Influencer 2016

HOUZZ 2015

Awarded Best Of Houzz 2015

THE INTERNATIONAL PROPERTY AWARDS 2014

Best Apartment
Interior Design, Show Home
Best Property Single Unit

THE INTERNATIONAL PROPERTY AWARDS 2013

Renovation & Developments

PREMIER GUARANTEE EXCELLENCE AWARDS 2013

Excellence Awards



Rutu Buddhdev
Founder & Managing Director

previous
DEVELOPMENTS

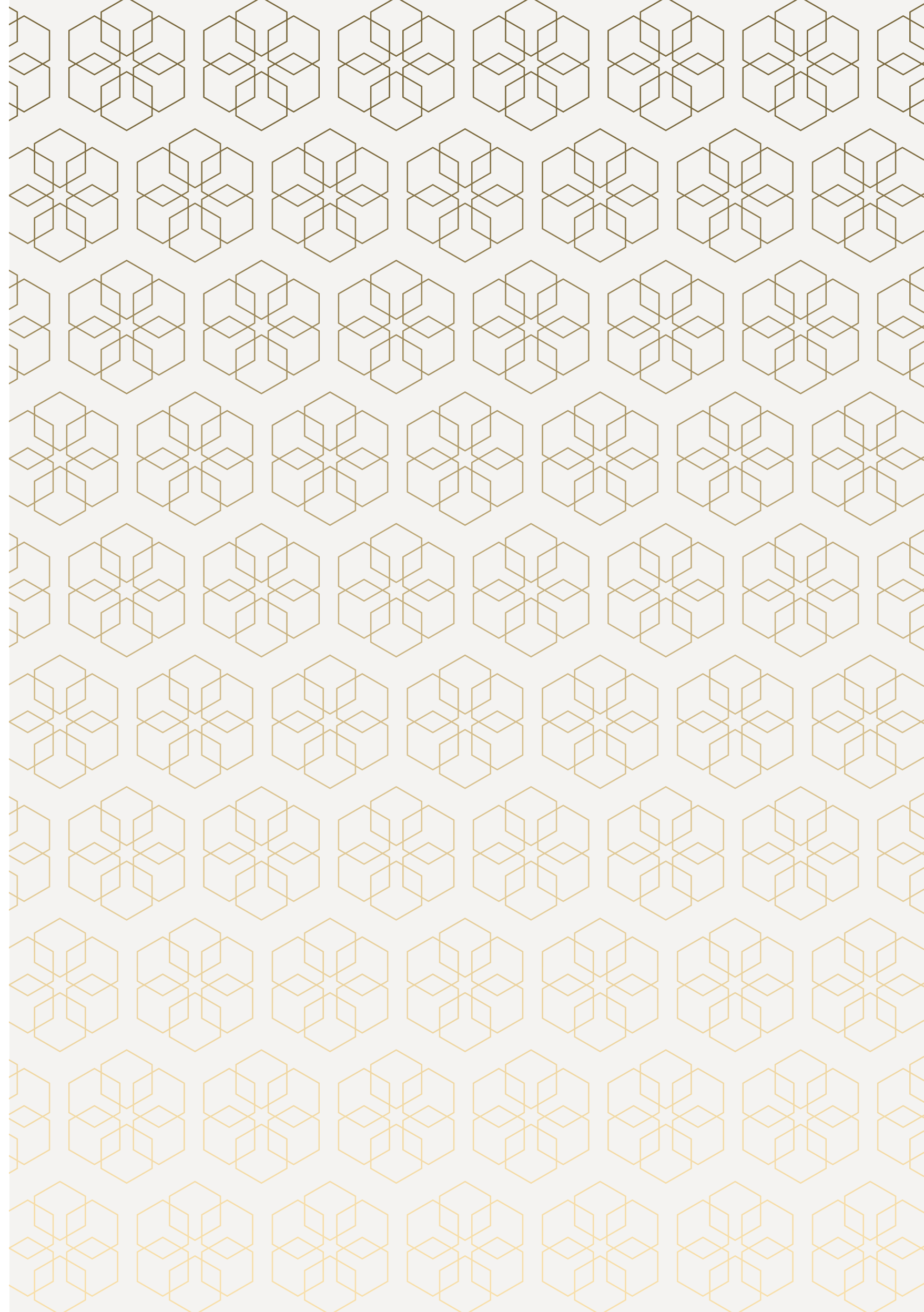




AMARAPROPERTY
exceptional homes made to cherish

Disclaimer

All details provided, including computer-generated images, are indicative and intended to act as a guide only and may change. The images contained within are Computer Generated Images and are indicative only. These details should be treated as general guidance only and cannot be relied upon as accurately describing any of the specified matters prescribed by any order under the Consumer Protection from Unfair Trading Regulations 2008. Nor do they constitute a contract or a warranty. Dimensions should not be used for carpet sizes, appliances or furniture. Amara Property operate a policy of continuous product development and individual features such as specification, windows and elevational treatments may vary. Six Senses is a marketing name and may not form part of the final address.
Photography credit Jamie Lau studiolau.com





AMARAPROPERTY
exceptional homes made to cherish

sixsenses-by-amara.co.uk